

# ITPassLeader



Pass Your Next Certification Exam Fast!

Select a vendor... Select an test... Your email address [Free Download Demo](#)



Instant Download



365 Days Free Updates



Money Back Guarantee



Security & Privacy

Choose the version that fits your needs

PDF Version

Desktop Test Engine

Online Test Engine

Latest and Up-to-Date exam dumps with real exam questions answers.



Get 12-Months free updates without any extra charges.



Experience same exam environment before appearing in the certification exam.



100% exam passing guarantee in the first attempt.



20% discount on more than one license and 30% discount on 5+ license purchases.



100% secure purchase on SSL.



Completely private purchase without sharing your personal info with anyone.



<http://www.itpassleader.com>

High-praise Exam Dumps Questions grant you success by high pass rate - ITPassLeader

**Exam** : **1z0-1066-22**

**Title** : Oracle Planning and  
Collaboration Cloud 2022  
Implementation Professional

**Vendor** : Oracle

**Version** : DEMO

**NO.1** What is one method of associating a Safety Stock Quantity value to an item?

- A. Enter your value in the Safety Stock Quantity column in the Items page.
- B. Run the Safety Stock Quantity Update Process.
- C. Enter your value in the Safety Stock Quantity Override column in the Items page.
- D. Upload the value using File Based Data Import (FBDI)

**Answer:** A

**NO.2** Which calendar is supported in the supply planning process but does not support bucketing by week?

- A. Lunisolar
- B. Gregorian
- C. Julian
- D. Fiscal
- E. Roman

**Answer:** C

Explanation:

The planning process supports two calendars for aggregation in the planning output:

- **Fiscal** calendars: Supports aggregation by week and period on the pages.
- Julian calendars: Supports daily bucketing and aggregation by calendar month. The Julian calendar does not support bucketing by week.

**NO.3** Which statement is NOT true about Collect Planning Data?

- A. If only a few business objects are selected for collection, their data dependencies are not automatically included in the data collection.
- B. If you use a predefined template, you can't change the business objects being collected, but you can change the Collection Type.
- C. During a Targeted collection for a specific business object, the existing data is first purged from the planning data repository.
- D. Net Change collection does not collect Shipment and Booking history data.

**Answer:** B

**NO.4** Your client manufactures consumer electronics and has all facilities live on Oracle Cloud. Their latest product has a very complicated manufacturing process and therefore can only be made at one facility (Organization ABC). However, it is ordered all over the world.

How should the Sourcing Rule be set up to accomplish this?

- A. A local sourcing rule for 100% make at ABC; a global sourcing rule for 100% transfer from ABC
- B. A local sourcing rule for 100% make at ABC; a global sourcing rule for 100% buy from ABC
- C. A local sourcing rule for 100% buy from ABC; a global sourcing rule for 100% transfer from ABC
- D. A global sourcing rule for 100% make at ABC; a local sourcing rule for 100% transfer from ABC
- E. A global sourcing rule for 50% make at ABC and 50% buy from ABC

**Answer:** C

**NO.5** Where do you view the collected data for Organizations, Customers, Suppliers, Carriers, and

Interlocation Shipping Networks?

- A. Maintain Supply Network Model
- B. Planning Analytics
- C. View Collected Data
- D. Review Plan Inputs
- E. View Simulation Sets

**Answer:** A

**NO.6** Which four actions does Demand Management enable you to do? (Choose four.)

- A. Simulate changes to the dependent options forecast for build to stock items.
- B. Simulate how changes to forecasting models and parameters have an immediate impact on the statistical forecast.
- C. Perform side-by-side analysis on a multiple number of scenarios, and see the impact on operational and financial objectives.
- D. Simulate the impact of introducing new products in particular geographic areas.
- E. Run an unlimited number of forecast simulations to see impacts of changes in the price, running a marketing campaign, shift in weather, demand upside request, and so on.

**Answer:** B,C,D,E

**NO.7** Which statement order is NOT true about how to effectively address demand at risk?

- A. Recommendations appear in one of these five categories (or tabs): Expedite Buy Orders. Expedite Planned Orders. Expedite Transfer Orders. Add Resource Availability, and Add Supplier Capacity.
- B. Be aware that recommendations to expedite buy orders not only include purchase orders and requisitions, but also planned buy orders.
- C. To maximize effort, use the Recommendations Summary graph and aim for a low number of recommendations with the associated at-risk demand value substantial enough to make a difference in demand fulfillment percentage.
- D. When you accept an expedite recommendation, the order is firming by using the expedite date as the firm date. So when the plan is run after accepting the recommendation, the planning process assumes the supply is available on the firm date.

**Answer:** A

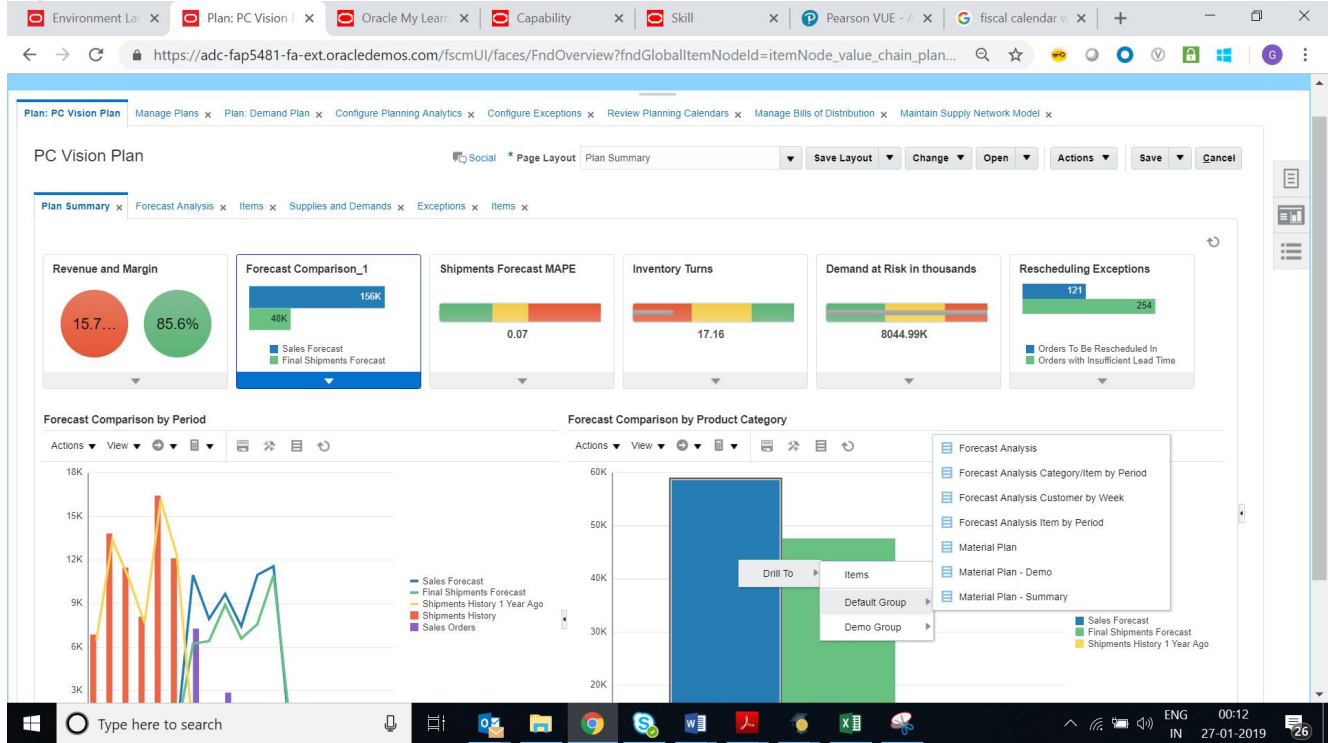
**NO.8** Demand planner opens the pre-seeded plan summary of the demand plan and wants to analyze the forecast results. Describe the steps to review and analyze the forecast results.

- A. Click "Revenue and Margin" tile. Review the "Revenue by Period" graph and pick a specific period. Right-click on a period, click Drill To -> Default Group -> Revenue Analysis to open the table and review the details.
- B. Click "Revenue and Forecast" tile. Review "Revenue by Period" graph and pick a specific period. Right-click on a period, click Drill To -> Default Group -> Forecast Analysis to open the table and review the details.
- C. Click "Forecast Comparison in the thousands" tile. Review "Forecast Comparison by Product Category" graph and pick a product category. Right-click on product category, click Drill To -> Default Group -> Forecast Analysis to open the table and review the details.

**D.** Click "Demand at Risk in thousands" tile. Review "Demand at Risk by Product Category" graph and pick a product category. Right-click on product category, click Drill To -> Default Group -> Demand Analysis to open the table and review the details.

**Answer:** C

**Explanation:**



**NO.9** Your clients want to simulate how canceling demand may impact a plan. Which two steps must be done to simulate this change? (Choose two.)

- A.** Open plan > View Supplies and Demands > Firm the demand and set firm quantity to 0 > Save changes
- B.** Run plan with 'Refresh with current data'
- C.** Manage Plans > Edit Plan Options > Add simulation set
- D.** Open plan > View Supplies and Demands > Remove the sales order from the plan and firm demand > Save changes
- E.** Run plan with 'Do not refresh with current data'

**Answer:** A,E

**NO.10** During an implementation, customer is in the process of planning supply requirements. Customer also needs to generate forecast and safety stock levels. Which plan type on the plan options should the customer be running?

- A.** Supply Plan
- B.** Safety Stock and Forecast Plan
- C.** Demand and Supply Plan
- D.** Integrated Plan
- E.** Demand Plan

**Answer:** C